

cadENZA.

by BerryAlloc

**the floor
of new
beginnings**



Allegro Light

laminata.



easy
installation



scratch
resistant



easy
maintenance

Why choose Cadenza?

Ready? Set? Go!

Cadenza has a super easy and super fast duoloc system, so this part of your renovation is minimum effort and maximum impact! It's a very tight loc that ensures a high quality connection of the planks, to last a lifetime.

This floor can handle anything

The top layer of cadenza is very scratch resistant and will make sure your floor stays just as beautiful as when first installing it. Let your pets race and your kids play, there is nothing to worry about.

Just give it a sweep

Cadenza makes your life easy : its surface does not absorb any liquids or dirt, so it's clean in no time. All the joys of a real wooden floor look without the worries!



Allegro Dark Brown

A beautiful floor for everyone.

Cadenza is the right choice for people looking for a beautiful and premium quality floor that is also wallet-size. This collection makes sure you can find a floor that fits your needs at an affordable price. Our select range includes 10 colours with subtle wood structures to suit any style. Cadenza has everything you need to get started!

4 4 bevels

easy installation

scratch resistant

easy maintenance

warranty 20 years residential use

floor heating / cooling compatible

class 32 | AC4

x9

2,66 m²
28.67 SQFT

1383 x 214 x 8 mm
54.45" x 8.43" x 0.31"

made in Belgium
100% quality



Marcato Brown Natural

The perfect combination of beauty and quality. Loved by those who are just getting started.

Pick your Cadenza.



Allegro Light K1003 | 62001922



Legato Light K1103 | 62001919



Legato Light Natural K1305 | 62001923



Marcato Brown Natural K1412 | 62001924



Allegro Natural K1207 | 62001916



Quick & easy installation.



Allegro Brown K1511 | 62001917



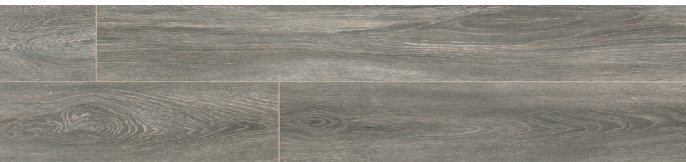
Allegro Dark Brown K1613 | 62001918



Legato Dark Brown K1713 | 62001925



Allegro Light Grey K1804 | 62001920



Legato Dark Grey K1910 | 62001921

Do-it-yourself has never been this simple. The DuoLoc locking system makes DIY'ers out of everyone and ensures damage-free installation. There are 2 different ways to install your floor: with or without tools.

1. Begin by clicking the short sides of the planks first.
2. Make sure the planks are perfectly aligned.
3. Lift the new planks to an angle of +/-25° and lock the long side in the previous row.

Tight on space or close to a wall? Lock the short sides together using our DuoLoc tapping block. Give it a small push with the hammer and the planks will click perfectly into place.

It's as easy as can be!

More detailed installation instructions, technical datasheet, warranty conditions and much more here :



The finishing touch.

Don't underestimate the power of good accessories! They will help to make your cadenza floor even better. Start with an excellent BerryAlloc underlay and finish with paintable skirtings and/or aluminium profiles.



Underlay Excellence Go -19dB

15m² roll
63002672

20 m² roll
63002673



Paintable skirting 60 mm
63001756



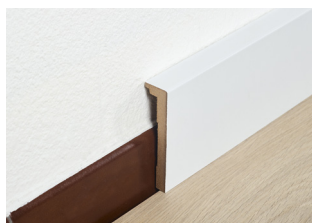
Paintable skirting 80 mm
63001776



Paintable skirting 100 mm
9372-3045



Paintable English skirting 110 mm
9370-3045



Coverskirting 110 mm
63001781



Quarter Round 14 mm
63001736



T-profile aluminium (7-12 mm)
L 2000 mm SILVER | 63001103
L 2000 mm BRUSHED STEEL | 63001105



Reducer aluminium (7-12 mm)
L 2000 mm SILVER | 63001107
L 2000 mm BRUSHED STEEL | 63001109



End-profile aluminium (7-12 mm)
L 2000 mm SILVER | 63001111
L 2000 mm BRUSHED STEEL | 63001113



Duoloc tapping bloc
63001777



make room
for life.

Legato Light Natural

cadenza.
by BerryAlloc

BerryAlloc NV
Industrielaan 100
8930 Menen - Belgium
T +32 56 67 66 11
info@berryalloc.com

	contains	m ²	ft ²	weight
1 pack cadenza	9 planks	2,66 m ²	28.67 ft ²	19,4 kg
1 pallet cadenza	56 packs	149,16 m ²	1605.60 ft ²	1098 kg

product specifications

dimensions mm / inch	1383 x 214 mm / 54.45" x 8.43"
total thickness mm / inch	8 mm / 0.31"
bevels	4
loc system	duoloc
level of use according to European standard EN10874	23 heavy domestic use
	32 general commercial use
residential warranty	20 years
commercial warranty	3 years

composition

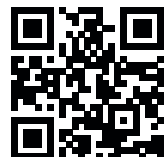
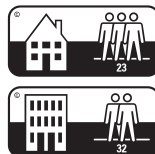
surface layer	direct laminated paper, impregnated with melamine resin
substrate	moisture resistant High Density Fiberboard (HDF)
backing	direct laminated paper, impregnated with melamine resin

test results

abrasion resistance	EN13329	AC4 (IP≤4000)
impact resistance	EN13329	Small ball : ≤ 12 N - Big ball : ≤ 750 mm
thickness swelling	EN13329	≤ 18 %
fire resistance	EN14041	Cfl-S1
formaldehyde emission	EN14041	E1
slip resistance	EN14041	DS
density	EN323	900 kg/m ³
resistance to staining	EN438	5 (groups 1+2); 4 (group 3)
effect of a furniture leg	EN424	no damage (foot type 0)
effect of a castor chair	EN425	no change in appearance or damage
thermal resistance in combination with underlay Excellence Plus	ISO 8302	0,08 m ² K/W – Suitable for floor heating/cooling. Detailed instructions on www.berryalloc.com



*Information sur le niveau d'émission de substances volatiles dans l'air intérieur, présentant un risque de toxicité par inhalation, sur une échelle de classe allant de A+ (très faibles émissions) à C (fortes émissions)



cadenza. installation manual

by BerryAlloc

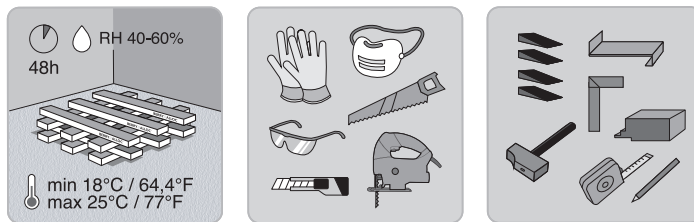
Cadenza laminate floors are designed for :

- Heavy domestic use : bedrooms, living rooms, kitchens, entrances
- General commercial use : classrooms, small offices, hotels, boutiques



For a fast installation and a perfect result that fulfills the warranty conditions, we advise to follow the below mentioned installation instructions carefully.

1. planning your installation



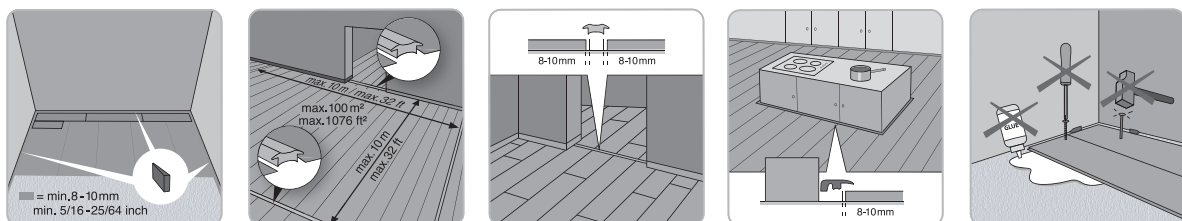
It is important to store the laminate boxes at room temperature for at least 48 hours before the installation. Do not open the packs and stack them in a way so they have maximum contact with the air. The floor should be installed at a room temperature of 18-25 °C and a relative humidity of 40-60%.

tools

- Electrical or hand saw
- Spacers
- Hammer and tapping block if you prefer a snap installation
- Installation iron can be convenient for difficult situations or when there is no room to use a tapping block (against the wall)
- Measurer and pencil, T-square

For your safety, use protective clothing : gloves, dust mask, protective glasses.

Apart from tools do not forget the skirtings and finishing profiles (doorways, transitions to other floors,...), and a suitable BerryAlloc underlay!

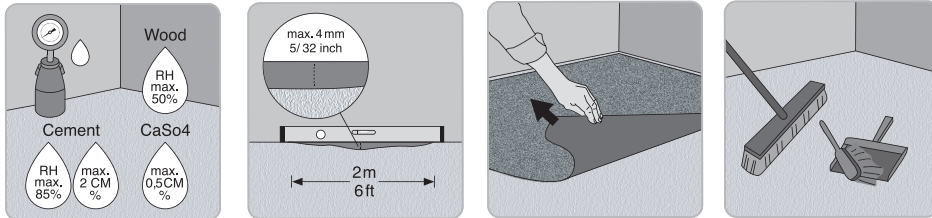


Cadenza laminate should be installed as floating flooring which means that the floor should be able to move :

- Do not screw or glue the floorboards to the subfloor.
- Do not install laminate floor under fixed constructions such as kitchen cabinets or built-in closets.
- Leave a 8-10mm expansion gap to walls and other fixed constructions so that the flooring can move.
- Always install expansion profiles in doorways.
- In areas which do not join symmetrically and when the room length/width exceeds 10 m, install expansion profiles.

2. preparing the subfloor

Cadenza laminate can be installed on most hard subfloors, e.g. chip/plasterboards, PVC or concrete (be sure that the existing subfloor construction is fixed).



The subfloor must be totally dry:

- Wooden and wood based material, max. 50 % relative humidity
- Concrete and light concrete floor, max. 2,0 CM % (1,8 CM % if floor heating)
- Plaster and plaster based floor, max. 0,5 CM % (0,3 CM % if floor heating)

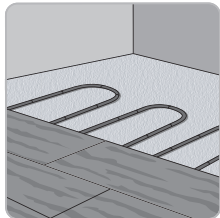
The subfloor has to be even (max. height difference of 4mm per 2m). Sharp edges must be smoothed and holes filled. This is important because an uneven subfloor can cause squeaking noises.

Soft material like a wall-to-wall carpet needs to be removed.

Clean the subfloor before you start the installation.

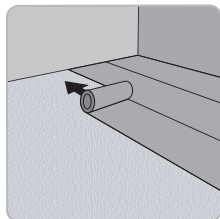
On an existing wooden floor, cadenza laminate should be installed across the old floorboards.

3. floor heating / cooling



If you have a subfloor heating system, be sure to read our separate [manual for installing laminate on top of floor heating](#).

4. underlays



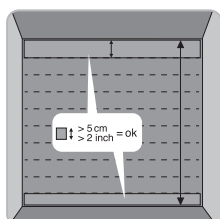
We recommend to install your laminate with a BerryAlloc underlay that suits your situation : reduce footfall noise, floor heating compatible,....

BerryAlloc underlays are specially developed for our floors, and with the same high quality standards, to ensure a perfect result.

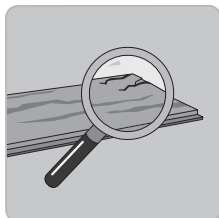
Please check our [underlay guide](#) for more info.

5. getting started

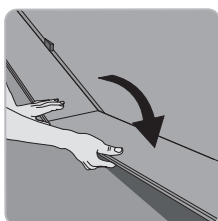
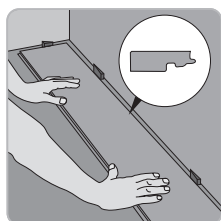
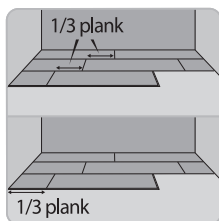
Direction of the planks : the floor will look at its best if installed parallel to the incoming light (short side facing the light).



Measure the length of the room from the point where you plan to start to the wall where you will end. Divide this by the width of a plank. The purpose is to never end with a plank that is less than 5cm wide. If that is the case, you should modify the width of the first row (saw the plank so that you don't start with a full plank, but it should be more than 5cm).

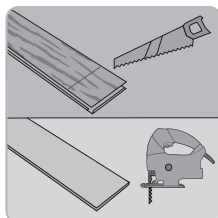
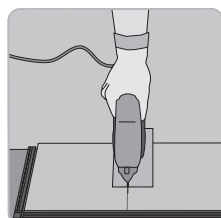
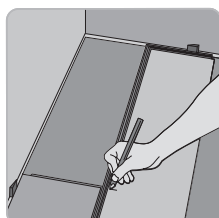


Check all planks for visible defects in optimal light conditions, both before and during installation. Planks with defects must not be used.



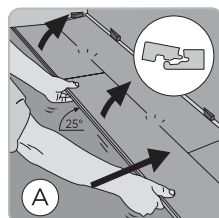
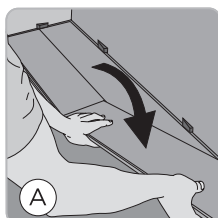
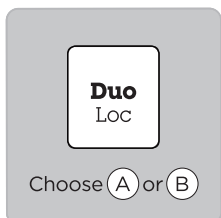
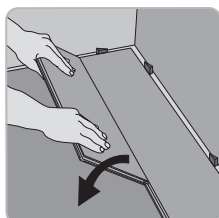
For the most natural floor pattern, make sure to mix the designs of the planks across the floor. The end joints should be staggered min. 1/3 of a plank when installing the floorboards. The first and the last floorboard in each row should have a minimum length of 1/3 of a plank.

Start the first row with the tongue sides to the wall, and put the spacers for the expansion gap of 8-10mm. At the end of the row, to cut a plank in the exact length, put a plank on the reverse side against the wall – do not forget the expansion gap. Mark where the plank has to be cut and use a T-square to draw the cutting line.



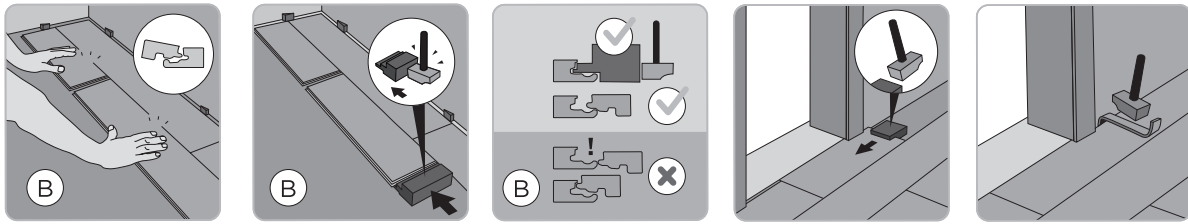
If using a hand saw, cut on the pattern side, if using an electrical jigsaw, always cut on the back side of the plank. A sharp saw blade is a must for the best result!

6. a quick and easy installation

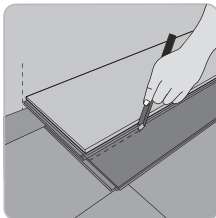


The DuoLoc system allows you to choose the laying :

- Ⓐ Without tapping block : connect the second row on the short sides first. Make sure the planks are perfectly aligned. Then lift the plank to an angle of +/-25° and lock the long side in the previous row.



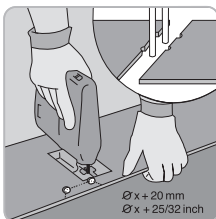
- B** With tapping block/installation iron and hammer : lay the first plank of the second row. Lay the second plank right next to it and lock the long side in the previous row. Check the position of the locking system, because an incorrect position can damage the locking system. Put the tapping block on the other end of the plank and also make sure that the tapping block is used in the right position. Then gently tap the block until the joint closes. If there is no room for a tapping block, use the installation iron.



To install the last row, position a panel exactly on top of the previous row. Place another panel upside down up to the wall and mark the panel underneath. Cut the marked panel to size and fit in place. This method should be repeated for each panel until the last row is complete.

Wooden doorframes should be shortened enough to make a plank and underlay fit underneath. Lay a panel face down next to the doorframe.

Saw the panel, then slide the plank under the doorframe. Keep an expansion gap under the doorframe of 8-10mm!



If you have heating pipes, measure their exact position and mark it on the laminate. Add 20mm to the dimension of the pipe, because the laminate has to be able to move in all directions around the pipe. Saw from the drilling holes to the side of the laminate in an angle of 45° and put the laminate in place.

Ø x + 20 mm
Ø x + 25/32 inch

7. a perfect finish

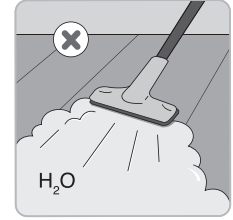
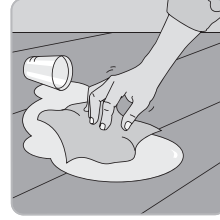
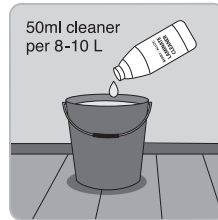
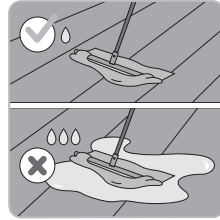
Finish your cadenza installation with a wide range of accessories, with a timeless design :

- Paintable modern skirting 60mm, 80mm and 100mm high
- Paintable English skirting 110mm high
- Paintable quarter round
- Aluminium floor profiles in silver or brushed stainless steel : T-profile, reducer, end profile

When installing accessories, always keep in mind that the floor has to be able to move. This means :

- Skirtings should never be attached to the floor, they can be fixed to the wall with clips or in case your walls are not straight, use the BerryAlloc glue to glue the skirting to the wall.
- After you have installed a skirting or profile, do not seal/fix it to the laminate with sealant. The movement of the laminate will cause cracks in the sealing product which makes the sealant ineffective and unesthetic.
- Joints on fixed building elements (door frames, heating pipes, etc.) should never be completely sealed with elastic filler. Use a Fillertwine first and then finish with elastic filler, this allows the floor to move.
- Profiles, doorstops and suchlike should not be screwed through the laminate into the subfloor.

8. care and maintenance



A laminate floor is very easy to clean :

DRY CLEANING : with a brush, mop with dry wipes or vacuum cleaner

WET CLEANING with a well wrung-out cloth – avoid using too much water!

Clean up any spilled liquids immediately. We strongly recommend to use the BerryAlloc laminate cleaner, it's specially developed to clean our laminate floors and leaves no traces. Never use steam cleaners on laminate.



Put doormats at every entrance to protect your laminate from dirt and sand.

Lift heavy furniture and put felt pads on the legs of your chair. Use a protective floor mat under your castor chair.

Laminate can not be polished or treated with products that contain wax or oil.

For more details : read our [care and maintenance manual](#)

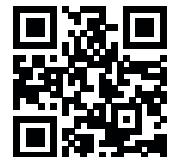
9. warranty

By following the above mentioned instructions you will extend the longevity of your laminate flooring and ensure the validity of the warranty.

We refer to our warranty conditions or warranty policy for more info.

Enjoy your cadenza floor!

product leaflet
installation manual
warranty conditions
care & maintenance
floor heating manual
underlay guide





residential use (first owner)

	class	wear resistance	fade resistance	stain resistance	lock system/joint integrity	water resistance
Cadenz	32	20 years	20 years	20 years	lifetime	no

commercial use (first owner)

	class	wear resistance	fade resistance	stain resistance	lock system/joint integrity	water resistance
Cadenz	32	3 years	3 years	3 years	3 years	no



This warranty document applies to Cadenza laminate floors.

- This limited warranty is only applicable to the first installation by the original customer. The limited warranty is not transferrable.
- This warranty starts on the original date on which the customer, mentioned on the purchase invoice, has bought the floor.
- The limited warranty is applicable to the extent that the Cadenza floor was purchased after the edition date of this document.

Cadenza floors are guaranteed for a fixed number of years, under normal use conditions, starting on the invoice date.

Product	Residential areas ¹⁾	Commercial areas ¹⁾
Cadenza	20 years ²⁾	3 years

1) Area of use is defined according to EN 13329. Intensity of use is defined according to EN 685.

2) The value of the product is not reduced within the first 3 years. After 3 years, the value of the product will depreciate with a defined percentage every year (percentage depending on remaining warranty period).

The services presented in this warranty document do not prolong the warranty nor do they start a new warranty period.

This warranty covers defects in materials and/or workmanship relating to:

Wear resistance

The decorative surface of Cadenza has a resistance to abrasion according to the class of the product as defined in EN13329. Surface wear is defined as worn out spots larger than 1 cm².

Fade resistance

Cadenza will resist fading from exposure to indirect sunlight or normal artificial light.

Stain resistance

Cadenza will resist stains on the decorative surface. For further information see Care & Maintenance instructions.

Joint integrity

Perfect installation – The Cadenza floorboards align perfectly.

Added value – The Cadenza floorboards can be taken up and reinstalled at least 3 times.

Easy floorboard replacement – The Cadenza floorboards can easily be taken up to replace damaged floorboards.

Provided that:

- the floorboards were checked for visible defects prior to the installation. Floorboards with visible defects are NOT to be installed. Complaints for such defects will not be accepted after the installation. If you discover visual defects, keep the planks and notify your distributor.
- the product was installed in areas that correspond with its intended use, and in accordance with the classification referred to in the installation instructions and on the box.

product leaflet
installation manual
warranty conditions
care & maintenance
floor heating manual
underlay guide



- the product is installed and used indoors in a climate of 18-25 °C with corresponding relative humidity of 40-60 % RH.
- the product is installed in accordance with the installation instructions of BerryAlloc, which are included in the packaging. If you cannot find the instructions, or if you need a more detailed explanation, you should request them from the distributor/manufacturer. We recommend using the BerryAlloc accessories, and for commercial applications use the BerryAlloc aluminium floor profiles.
- the product is maintained in accordance with the care&maintenance instructions of BerryAlloc.
- the product has not been treated in any way after installation (e.g. polished or waxed).
- the laminate is not installed under kitchen cabinets or under very heavy objects. Never install built-in cupboards on your laminate floor. Leave an expansion joint so that the floor can move and finish with a floor profile.

The product warranty does not cover damage to the product caused by:

- transport, storage and handling
- improper installation
- accidents, product misuse or product abuse, such as:
 - cracks, blows and cuts caused by falling/dropped objects, cutting or grinding objects
 - scratches and finish damages caused by sand, grit or other abrasive materials, regardless of whether these are caused by a contractor, service company or the end user
- normal wear and tear (aging), i.e. scratches, friction marks and similar marks in the floor surface
- higher traffic than the area of use the laminate is designed for
- improper maintenance or use of unsuitable cleaning agents. The correct cleaning procedures can be found in the care & maintenance instructions of BerryAlloc.
- flooding or standing water (with or without detergents) or trapped water between the Cadenza floorboards and the subfloor.
- exposure to extreme temperature changes
- strong chemicals with corrosive substances
- pet urine

What to do in case of an unlikely defect?

You should contact your dealer within 2 weeks of the date upon which the defect first became known. Documents that should be submitted to BerryAlloc when reporting the claim are a filled out claim form (can be obtained by mailing aftersales.berryalloc@bintg.com) accompanied by a copy of the original invoice. BerryAlloc has the right to inspect the floor and the way it was installed, on the spot.

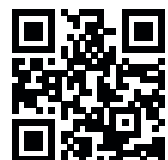
If a product problem covered by the warranty is acknowledged by BerryAlloc, the manufacturer will offer a replacement of the defective floorboards in the same design (or equivalent when not available). The product warranty does not cover any labour cost associated with replacement of damaged material covered by the warranty. This warranty does not cover any consequential or special incidental charges, damages or losses.

This warranty grants you specific legal rights, which may vary from country to country.

Some countries do not allow the exclusion or limitation of implied warranties or incidental, consequential, emotional distress or punitive damages and in such event, the exclusions and limitations set forth above shall be construed and enforced to the fullest extent possible by the laws of any such state. Accordingly, some of the above limitations may not apply to you.

This limited warranty is granted by BerryAlloc NV, having its registered office at Industrielaan 100, 8930 Menen, subscribed in the register of legal entities of Gent (division Kortrijk) under business registration number 0463.120.461.

product leaflet
installation manual
warranty conditions
care & maintenance
floor heating manual
underlay guide



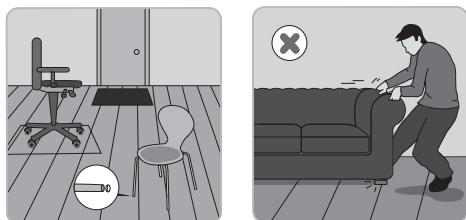
These instructions apply to all cadenza DPL floors (Direct Pressure Laminate).

1. protect

Cadenza DPL is an easy-care, wear-resistant floor with a long lifespan and a hygienic hard surface.

To to protect your floor, we recommend the following actions :

- Place a suitable doormat at your entrance(s) to absorb dirt and/or moisture. Sand and dirt can have the effect of "sandpaper" and may cause premature wear and tear or scratches.
- Place felt pads under the legs of chairs and tables to avoid scratches.
- Equip other furniture and heavy objects with felt pads for safe moving.
- Clear plastic mats must be used under office chairs with wheels.



Indoor temperature and relative air humidity

The cadenza DPL floor is produced from wood material that reacts on changes in the indoor climate. The ideal indoor climate for a laminate floor is a relative humidity between 40 and 60 % and a temperature between 18 and 25 °C.

Static electricity

Cadenza DPL is a partially insulating floor covering. If the relative humidity in the room is kept at around RH 50 % or more, then this will reduce the floor's ability to develop static charges.

2. clean

Cadenza laminate floors are extremely easy to clean. In very little time and with a minimum of effort you can enjoy a clean and beautiful floor for many years.

Dry cleaning methods

For daily cleaning, we recommend that you use a soft brush, vacuum cleaner or dry dust mop. Microfiber mops are ideal.

Wet cleaning methods

When cleaning with water, a well wrung-out cloth and lukewarm water are recommended. Avoid using too much water.





laminate cleaner

The BerryAlloc laminate cleaner is a biodegradable cleaning agent that dries without smears, leaving a pleasant fragrance. Use 50ml per 8-10L of water and clean the floor with a well wrung-out cloth. Water spill should be wiped off immediately.

Be careful : The floor is more slippery when wet (reduced slip resistance).

Don'ts:

- Never use steam cleaners on a cadenza laminate floor.
- Never use highly concentrated soap solutions on the floor
- Do not use organic detergents, they will leave a thin film of grease on the surface, resulting in visible footprints. Only synthetic detergents are recommended.
- Do not wax, varnish or polish the floor

3. stains/damage repair

Stubborn stains can be cleaned as shown in the table below:

Stains	Remove with
Blood	Wrung-out cloth
Coffee, tea, chocolate, juice, milk, wine, beverages, grease	Wrung-out cloth, lukewarm water and a small amount of synthetic detergent
Rubber, oil, tar, shoe polish, soot, nail varnish, lipstick, drawing ink, colour pencil, chalk, paint	Methylated spirit/white spirit/acetone (these solvents are not to be used in V-grooves!)
Wax from candles, chewing gum	Allow to harden, scrape off carefully using a plastic scraper, clean remains with acetone

Never use steel wool or other abrasive cleaning methods on a cadenza laminate floor.

Damages such as tears and cuts in the surface can be repaired with a laminate flooring repair kit. Seriously damaged floorboards should be completely replaced.

4. warranty

By following the above instructions, you will extend the longevity of your laminate floor and ensure the validity of the warranty. We refer to our [warranty conditions](#) or [warranty policy](#) for more info.

Cadenza laminate can be installed with floor heating and/or cooling, but some important remarks have to be considered to protect your laminate and have the best result of your heating system. Both waterborne and electrical systems are compatible with laminate as a part of the subfloor construction.

For the installation of Cadenza laminate on a subfloor with floor heating, our general installation instructions on the box inlay still apply.

In addition to the general instructions, this is our floor heating specific advice:

1. What you should know before the installation

- In case of electrical heating systems, the capacity of the **heating elements should not exceed 60 W/m²**.
Multiply the m² of the surface with 60 to find out the maximum allowed effect of the heating elements.
For example: 26 m² x 60 W/m² = 1.560 W => Choose a heating system with a max. capacity of 1.500 W.
- Maximum allowed **surface temperature** on the Cadenza flooring is **27 °C (80 °F)**.
For waterborne heating systems this means that the supplier of the heating system must calculate what the maximum incoming and outgoing water temperatures should be to make sure that the surface temperature stays below 27 °C (80 °F).
Additionally, an IR-sensor for constant measurement of the surface temperature is recommended.
Be aware that loose rugs and mats may function as heat accumulators.
- If only a part of the floor has floor heating, but your Cadenza laminate continues in areas without floor heating, these areas always have to be separated by **expansion profiles**. The heated and non-heated areas will otherwise react differently due to difference in surface temperature.
- You always need to install a **moisture barrier** (ageing resistant polyethylene foil) with a minimum thickness of 0.2 mm to prevent any condensation damage to your laminate. This moisture barrier can be integrated in an underlay, or it can be laid separate.
- We recommend to use an **underlay with low insulating property**: BerryAlloc Excellence Plus underlay is our best performing underlay for floor heating (see thermal resistance values below) and has an attached moisture barrier.

Note: floor heating with heating foil/mats:

When installing Cadenza laminate on heating foil/mats (equipped with a soft thermoplastic underlay/insulating board) no other underlay must be used.

- **The thermal resistance** of a floor used in combination with underfloor heating should **not be higher than 0.15 m² K/W**.
Overview of the thermal resistance values of Cadenza laminate combined with the BerryAlloc underlays in m² K/W:

Floor thickness	Excellence Go	Excellence Plus	Excellence Impact+
8mm	0.10	0.08	0.11

- Systems that combine both floor heating and cooling need special attention because of the risk of condensation, which could cause damage to the laminate. If the temperature of the the cooling water drops below the so called 'dew point', it will cause condensation which can lead to swelling, gapping, distortion and warping of the laminate.
To protect the quality of your Cadenza laminate and to ensure that your laminate warranty remains valid, make sure that:
 - the water temperature never goes below 18 °C - 64 °F
 - you limit the temperature difference between the floor and the surroundings to 6 °C - 42,8 °F
 - your cooling system is equipped with an automatic anti-condensation control system that adjusts the temperature of the ingoing water
- Always ask your supplier of the heating/cooling system if it is compatible with laminate flooring and if he is able to meet all the necessary requirements prior to installation!

2. Preparation before installation

- The floor heating should be switched off 2 to 3 days before installing the laminate. Install the laminate at room temperature (between 18 °C and 20 °C – 64 °F and 68 °F).
- The subfloor must be dry:
 - concrete and light concrete floors should have a max. of 2,0 % according to the CM method (RH <85 %)
 - plaster based flooring maximum 0,5 % according to CM method
- Install a moisture barrier according to the instructions above.
- Install your Cadenza laminate (free floating with expansion gaps) according to the installation instructions on the inlay in the box.

3. After the installation

- When the installation of the Cadenza laminate is finished, or if the heating system have been turned off for a long period of time, consider that:
 - The first week the heating system should be set on a low temperature, 18-22 °C (64-72 °F).
 - The following week the temperature can be increased gradually.

Warning: A too fast heating-up process will result in an extensive drying-out of the floor which can cause warping/shrinkage of the floor boards.